

Dragon Instructions with Pictures (PC)



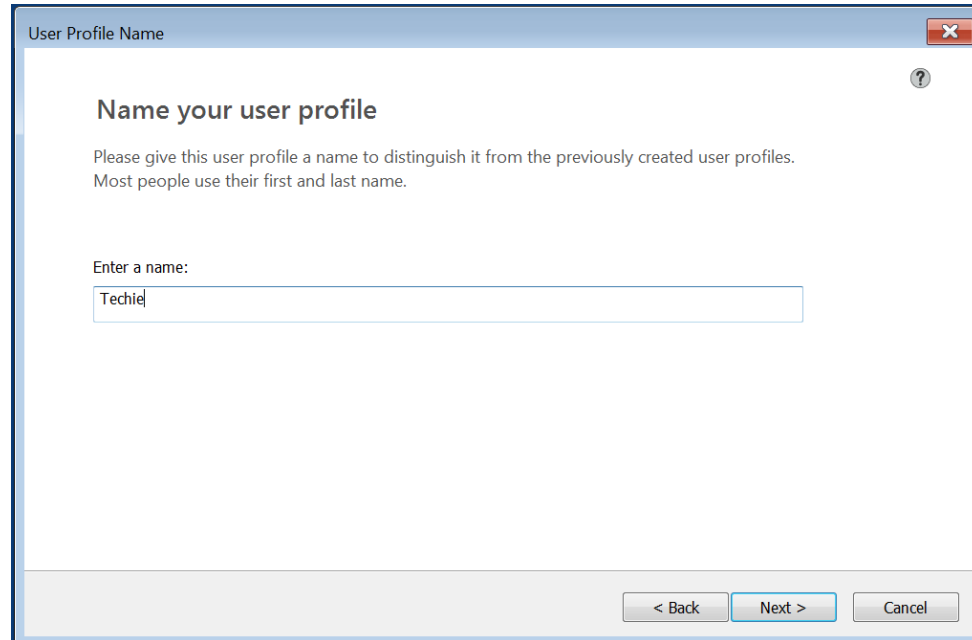
UNIVERSITY OF CALIFORNIA
SANTA CRUZ

DISABILITY RESOURCE CENTER

Table of Contents

• Creating a Profile on Dragon.....	3
• Calibrating Dragon.....	5
• Modes of Dragon.....	7
• Dictation	
• Command	
• Spelling	
• Numbers	
• Transcription	
• Correcting Dragon.....	14

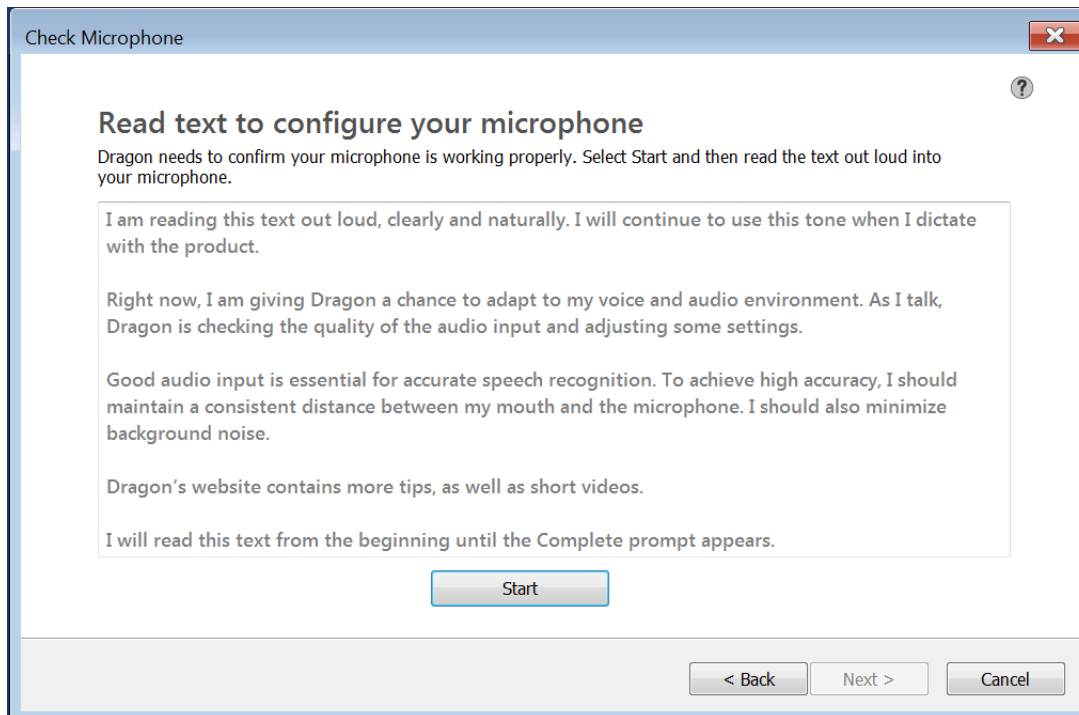
Creating a Profile



The screenshot shows a dialog box titled "User Profile Name" with a close button (X) in the top right corner. The main heading is "Name your user profile" with a help icon (question mark) to its right. Below the heading is the instruction: "Please give this user profile a name to distinguish it from the previously created user profiles. Most people use their first and last name." Underneath is the prompt "Enter a name:" followed by a text input field containing the text "Techie". At the bottom of the dialog are three buttons: "< Back", "Next >" (highlighted in blue), and "Cancel".

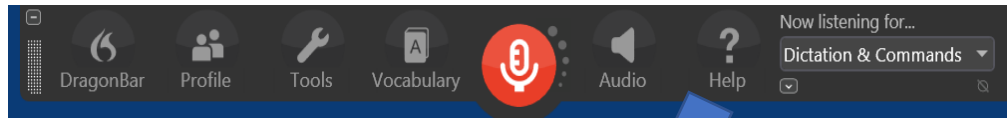
- When you first open Dragon, you will be asked to create a profile.
- Click Continue
- Select the Microphone you would like to use and click Continue
- Select United States and Click Continue
- Select the accent that most suits you, most likely “American”

Creating a Profile (Cont.)

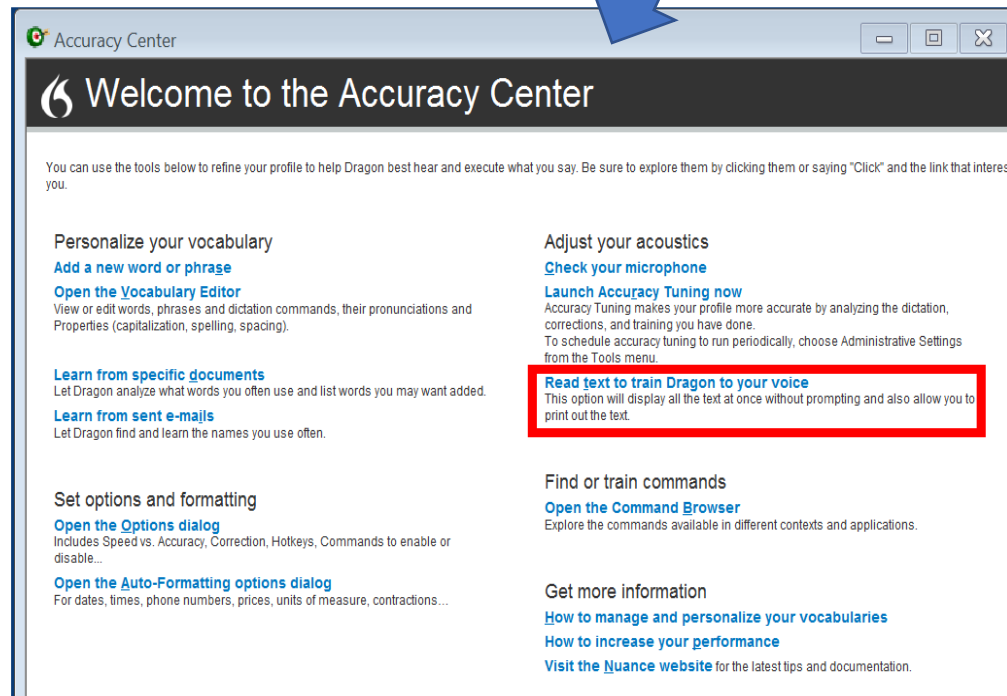


- Dragon will ask you to read a sample paragraph to begin to understand your voice
 - Note: Dragon may adjust before you finish reading
- Click Done

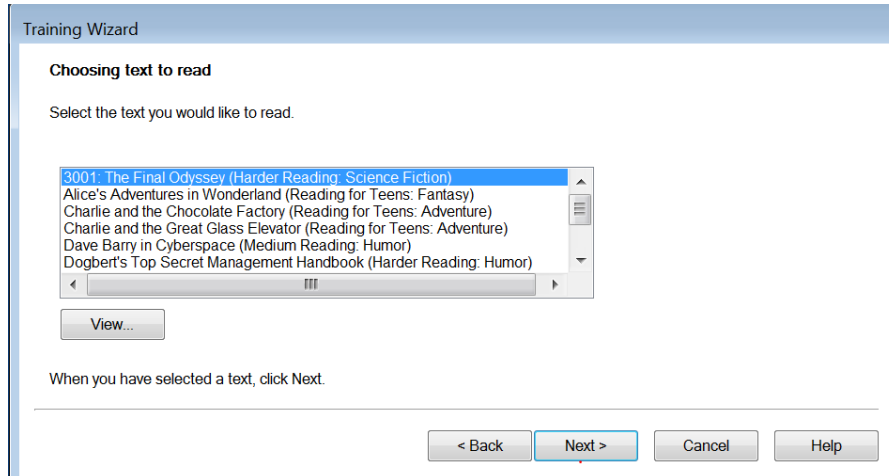
Calibrating Dragon



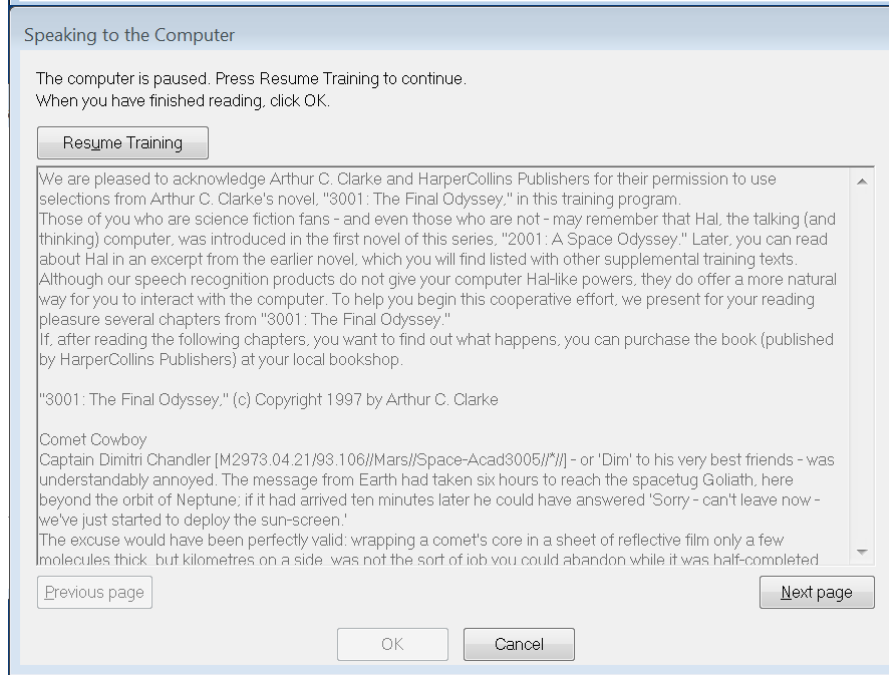
- To calibrate dragon do your voice, select "Improve my accuracy" from the help menu.
- Select "Read text to train Dragon to your voice"



Calibrating Dragon (Cont.)



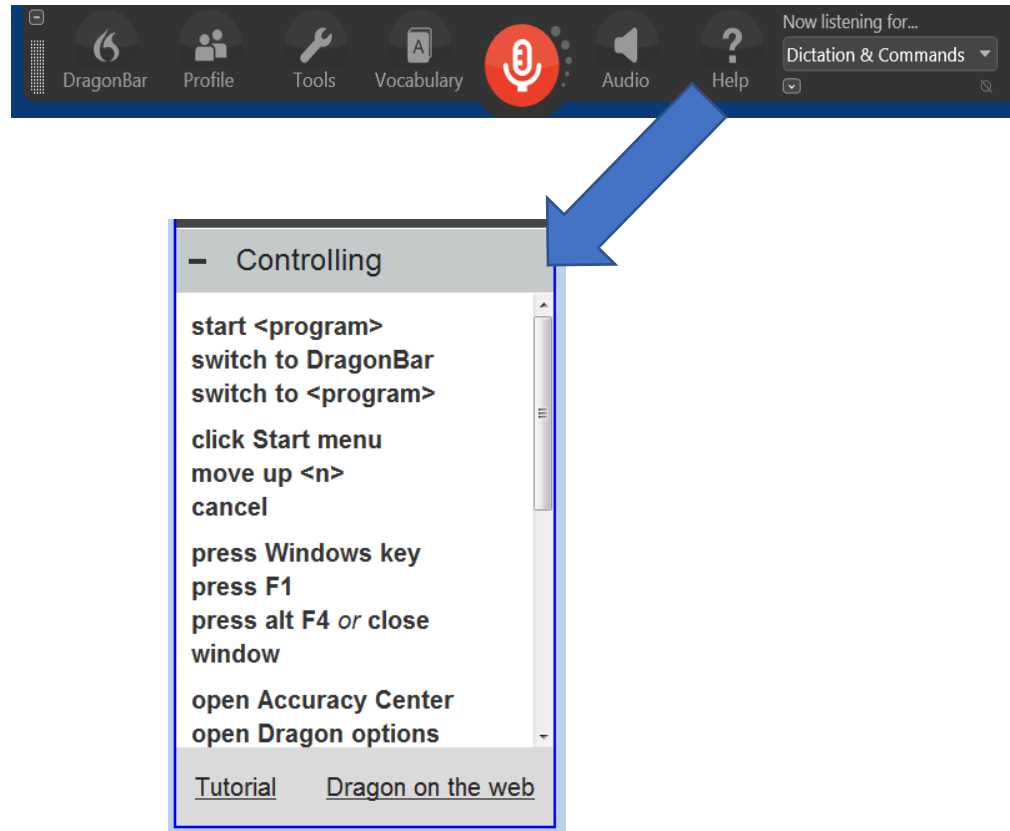
- Select which voice training you would like to do
- Dragon will have you read sections to better understand your cadence and tone
 - The more you do, the better dragon will work in the future



Modes of Dragon

- There are five different modes in Dragon:
 1. Dictation Mode
 2. Command Mode
 3. Spelling Mode
 4. Numbers Mode
 5. Transcription Mode

Modes of Dragon (Cont.)



- To change modes, click on the drop down menu and select the mode you want
 - Alternatively, you can say whichever mode you want to switch to
 - You can also select a mode from the dropdown menu
- You can look at the available commands for each mode through the “Learning center” tab on the DragonBar
 - You can access the learning center by clicking “Help” then “Learning Center”.

Dictation Mode

- In Dictation Mode, everything you say will be written in a text document
- Dragon will not be able to detect pauses as punctuation, so you must say words like, "Comma", or "Period".

Command Mode

- In Command Mode, you are able to control your computer through a number of commands.
 - Refer to pg. 8 for more information about finding commands
- Most built in software should be able to be controlled in this mode

Spelling Mode

- Spelling Mode is used to spell words that dragon can not properly spell
- This is mainly used for names or uncommon words

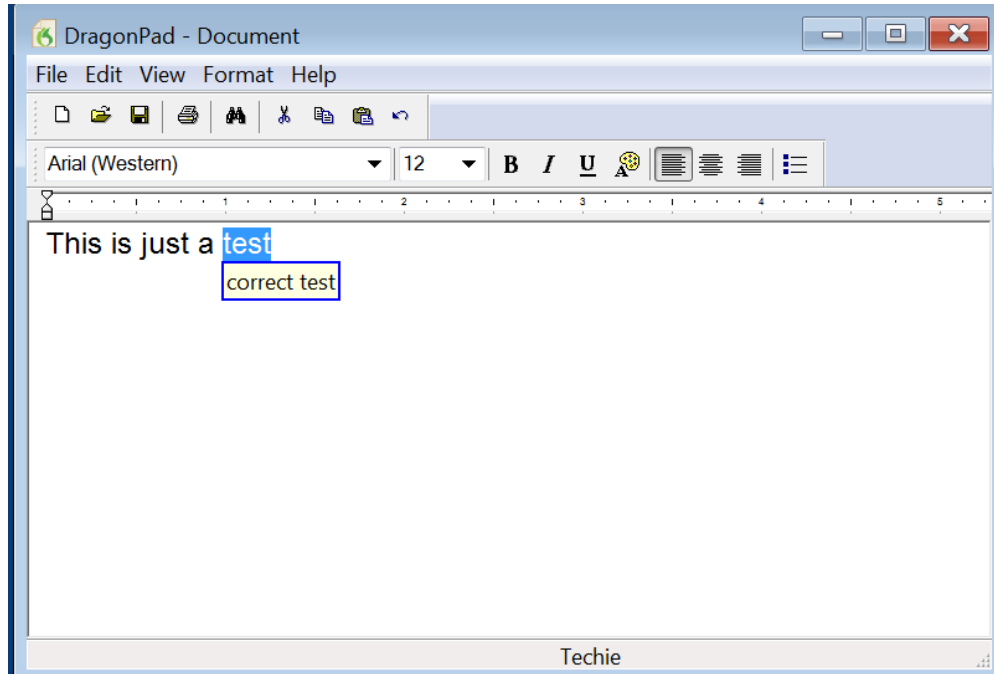
Numbers Mode

- Similar to Spelling Mode, Numbers mode allows for you to say numbers and have them written as numbers instead of letters.

Transcription Mode

- If you have any audio recordings, you can use Transcription Mode to have them changed into text
- You should review the transcription to make sure all sections accurately reflect the audio.

Correcting Dragon



- If at anytime Dragon makes a mistake, you can enter correction mode by saying “Correct”
- It will display up to four possible corrections to the last word or phrase stated
- Say the number of the word or phrase that is correct or follow the additional prompts.